

TECHNO-MIXERS

Questions and Answers

Q: Why are the bottles only half-filled?

A: The contents of the bottles are a concentrated product which, for best performance, must be diluted with warm water and allowed to sit for several hours before use. This is because phosphatidylcholine molecules (the main lipid in sunflower lecithin) in the product need to be hydrated. This process takes time, so be patient.

Q: What happens if I use TECHNO-MIXERS without dilution or don't allow enough time for hydration?

A: It will still function, but not as effectively. You might notice less sweetness, less taste-masking power and nutty or metallic lecithin taste, which disappears when the product is properly hydrated.

Q: Why do we sell concentrate instead of a ready-to-use diluted product?

A: TECHNO-MIXERS concentrate contains very little water, so it's stable without needing preservatives. After all, you likely prefer your products without preservatives. Plus, selling concentrate makes the bottles lighter, which lowers transportation costs and reduces both our carbon footprint and the price you pay.

Q: Why are Equal packets included in my box?

A: TECHNO-MIXERS uses only natural ingredients, which can be limiting. Some supplements and botanicals are extremely bitter or acrid, making it difficult to mask their taste with natural sweeteners alone. Artificial sweeteners like Acesulfame-K and Aspartame, found in Equal, are much stronger than natural alternatives and can help in these situations. If TECHNO-MIXERS isn't enough to improve the taste of your bitter or sour supplement, you can try adding Equal or another sweetener of your choice.

Visit [TECHNO-MIXERS.COM](https://www.techno-mixers.com) for more information



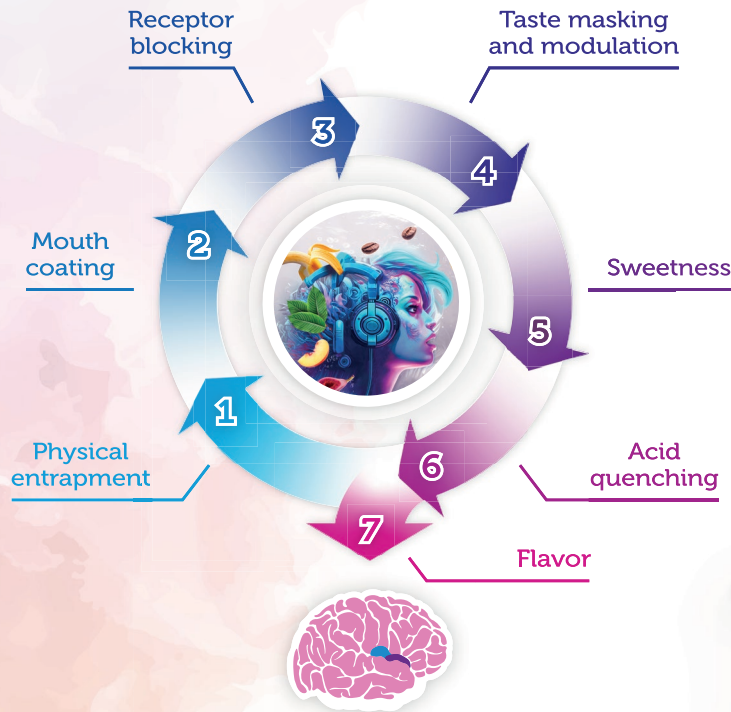
How do TECHNO-MIXERS mask bad taste and what separates them from ordinary flavored syrups?

If you take supplements by the spoon or in drinks, you've probably experimented with honey, orange juice, and coconut milk to mask the bitterness and other unpleasant tastes and flavors of your supplements. You may have even tried flavored syrups, hoping that if you just add enough, you can overpower the nasty taste. These approaches may work sometimes, but they add calories and volume. Most importantly, they are just one tool in the box—and not the most effective one. Our goal was to create a universal and easy-to-use solution that works on your most challenging botanicals and adds just a tad of calories and volume. Taste-masking is a science on its own and part of professional flavorist training that regular people know nothing about. Here is a quick summary of how TECHNO-MIXERS ingredients work together to get the job done and why our product is not just flavor and sugar.

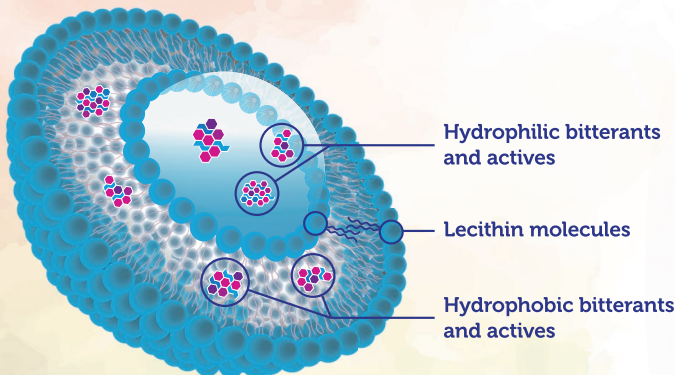
- 1)** The oil and phospholipids in lecithin form tiny particles suspended in water called liposomes. When your supplement comes into contact with TECHNO-MIXERS, the bad-tasting molecules in your supplement become bound to the liposomes, thus minimizing their interaction with your taste buds. This is called "physical entrapment". In most cases, these bad-tasting molecules are the active ingredients, so when they become bound to liposomes, they also become more bioavailable, giving your supplement a power boost.
- 2)** Lecithin, allulose and glycerin, coat oral surfaces, functioning as lubricants and protective barriers against irritants such as alcohol, propylene glycol, tannins, capsaicin, etc. These compounds do not interact with olfactory bulbs or taste buds; rather, they act upon Trigeminal Sensory Receptors. The sensations produced are classified as mouthfeel, distinct from flavors/scents or tastes.
- 3)** Minor phospholipids in lecithin (phosphatidylserine and phosphatidic acid) are known to specifically interact with taste buds and block unpleasant tastes from being recognized.
- 4)** We use a proprietary blend of plant-derived extracts that are known to mask and modulate unpleasant tastes and flavors. These extracts are considered "natural flavors", even though many of them do not impart a flavor or taste of their own. For example, even small amounts of vanilla and caramel may reduce unpleasant tastes and enhance sweetness, but you wouldn't even notice them unless you are a trained flavorist.
- 5)** Sweetness is very effective in masking bitterness and tartness. We utilize a blend of low- and high-intensity sweeteners (allulose, glycerin, monk fruit and stevia extracts) to improve mouthfeel and maximize taste masking while minimizing caloric content.
- 6)** Many extracts, tinctures, and supplements are extremely acidic, contributing not only to tart or acrid taste but also intensifying bitterness, irritation, and unpleasant flavors. The inclusion of Potassium Phosphate in our formula effectively neutralizes acidity, enhances palatability, and may help prevent heartburn.

7) All the ingredients listed above form the base of taste masking, the core technology that separates TECHNO-MIXERS from ordinary syrups. However, without the bright, complex, and recognizable flavor the concoction will be bland and boring. Technically speaking, the flavor itself is a minor contributor to taste masking, however, its impact on final result is tremendous. This is because flavors help our brain to integrate the signals coming from our taste buds, trigeminal nerves, and olfactory receptors, put together a final picture, and focus on something familiar, pleasant and comforting. Different flavors work better with different off flavors and individual palates. The wide variety of flavors used in TECHNO-MIXERS were specifically selected to work well with botanicals and other popular supplements.

TECHNO-MIXERS



STRUCTURE OF A LIPOSOME



TRIAL SIZE BOTTLES AND COST-EFFICIENT PUMP BOTTLES.



Selecting an appropriate flavor for your supplement starts with an educated guess that gets tested in an experiment. Flavors like Lemon Curd and Café Mocha are good options for bitter supplements because their own subtle bitterness creates a familiar taste experience. Fruity Maple and Raspberry, with their herbaceous notes, work well with botanicals derived from leaves. Individual preferences vary—a flavor you enjoy might not appeal to someone else. TECHNO-MIXERS' taste-masking base streamlines the process, and our vibrant selection of flavors brings diversity and turns mixing into an enjoyable adventure. Take a look at the table for ideas and start mixing!

Supplements	Inherent Tastes, Flavors, and Notes	Recommended Flavors of TECHNO-MIXERS
Whey Protein, Casein	Sour Whey, Chalky, Cardboard, Cabbage	Café Mocha, Caramel, Strawberry & Cream
Plant Protein (Pea, Soy, Pumpkin, Hemp, etc.)	Beany, Chalky, Earthy, Nutty, Grassy	Café Mocha, Peach Mango, Orange Cream, Raspberry
Lysine, Arginine, Citrulline, BCAAs, other amino acids, vitamins	Bitter, Metallic, Fishy, Salty	Fruity Maple, Orange Cream, Café Mocha, Grape, Caramel
Collagen Peptides	Fishy, Brothy, Putrid	Bubble Gum, Raspberry, Café Mocha, Orange Cream
Fish Oil/Omega-3, Algal Oil, Spirulina, Chlorella	Fishy, Muddy	Cherry, Raspberry, Passion Fruit, Bubble Gum
Ashwagandha, Kava, Maca, Turmeric, Barberry, Beet root, other root and bark derived botanicals	Bitter, Earthy, Astringent, Pungent, Spicy, Peppery	Orange Cream, Lemon Curd, Bubble Gum, Fruity Maple, Cherry, Grape, Café Mocha
Oregano oil, Ginkgo, Milk Thistle, Green Tea extract, Kratom, Moringa, Powdered Greens	Bitter, Grassy, Herbaceous, Leafy, Burnt, Nutty, Astringent	Fruity Maple, Raspberry, Strawberry & Cream, Lemon Curd, Bubble Gum, Peach Mango
Mushroom powders and extracts	Earthy, Bitter, Brothy, Herbaceous, Waxy	Raspberry, Café Mocha, Caramel, Fruity Maple
Electrolytes, magnesium, minerals	Bitter, Metallic, Salty	Orange Cream, Lemon Curd, Peach Mango
Propolis, Alcohol, Propylene Glycol, Tinctures and Liquid Extracts	Chemical, Irritating, Burning, Bitter, Botanical, Pungent, Astringent	Raspberry, Passion Fruit, Orange Cream, Strawberry & Cream
Schisandra, Garcinia cambogia	Sour, Acrid, Astringent	Cherry, Passion Fruit, Lemon Curd, Grape
Andrographis, Artichoke Leaf, Gentian Root, Bitter Melon	Extremely bitter, Herbaceous	Café Mocha, Fruity Maple, Lemon Curd, Caramel
Noni fruit, Yeast, Probiotics, Postbiotics, Short-chain fatty acids (SCFAs)	Cheesy, Putrid, Pungent, Rancid	Cherry, Raspberry, Passion Fruit, Fruity Maple, Café Mocha